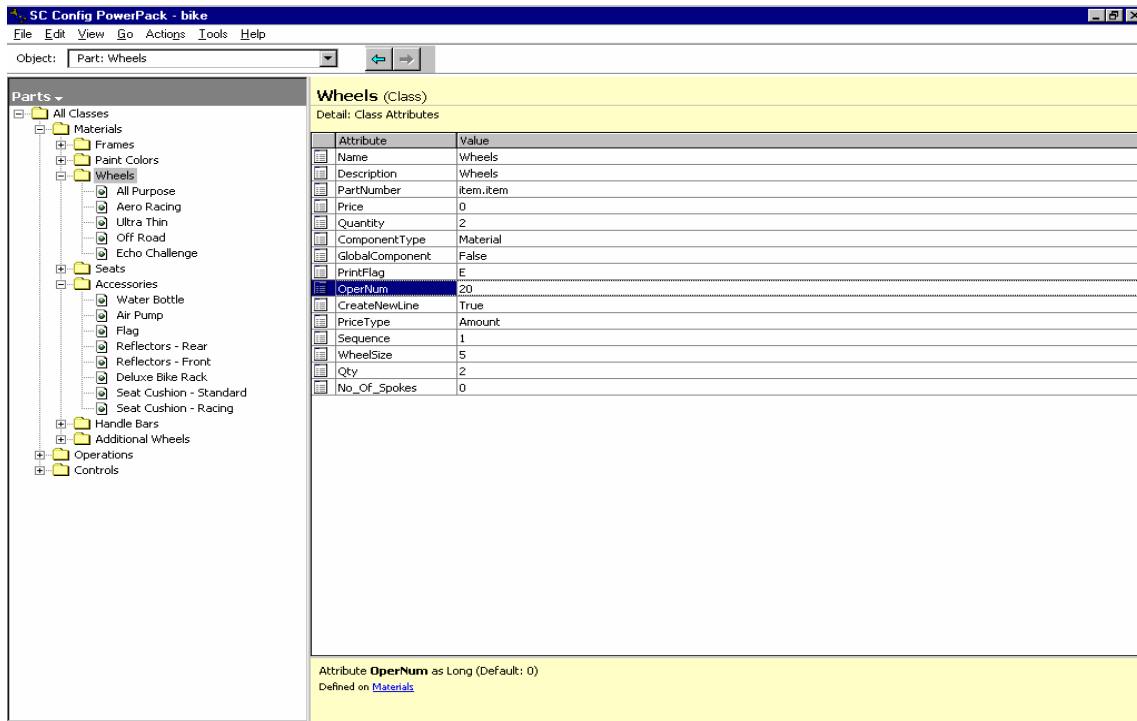




SyteLine Configuration – Name Attribute – White Paper

The purpose of this white paper is to fully explain how the “Name” attribute and the naming of “Used defined” attributes effect the outputting of information through SyteLine Configuration.

When working in conjunction with the CreateNewLine Attribute – During the Processing of the model a part selection that has the CreateNewLine attribute set to TRUE, SyteLine ERP does not use the part in the BOM, but it will create a new CO/EST line item for the part. If multiple parts are selected, each having the CreateNewLine attribute set to TRUE, the above is still applicable. However, some consideration will need to be given if the items selected need to be added to the order lines in a particular order. The way that this works is SyteLine Configuration adds the line items by sorting on the Name attribute in an Alphanumeric order for each selection. In the following example I have set the CreateNewLine Attribute to TRUE for both the Wheels and Accessories:



Name Attribute

All Purpose
Aero Racing
Ultra Thin
Off Road
Echo Challenge

Part Number

SA-61500
WA-27000
WA-37000
MW-61500
MW-61500

Description

Wheel, Assembly, 26"
Wheel, Assembly, 27"
Wheel, Assembly, 700mm
Wheel, Assembly, Mountain
Echo Challenge

Water Bottle
Air Pump
Flag
Reflectors – Rear
Reflectors, Front
Deluxe Bike Rack
Seat Cushion – Standard
Seat Cushion – Racing

ZAL-300
ZAL-400
FL-10000
RF-10000
RF-20000
BR-20000
CU-10000
CU-20000

Rack, Water-Bottle
Pump, Bicycle
Flag, Red-White-Blue
Reflectors – Rear
Reflectors, Front
Bike Rack – Deluxe
Cushion,Touring,Seat
Cushion,Racing,Seat



SyteLine Configuration – Name Attribute – White Paper (cont'd)

After running the model through SyteLine the following results:

The screenshot shows the 'Order Line Maintenance - DALS' window. At the top, there is a menu bar with 'File', 'Edit', 'List', 'View', 'Activities', 'Reports', 'Utilities', 'Quick', 'Window', and 'Help'. Below the menu is a toolbar with various icons for file operations and calculations. The main area contains fields for 'Order: NAttrib', 'Name: MCMaster-CARR SUPPLY CO', and 'Order Date: 08/01/01'. Below these fields is a table with columns for 'Ln#', 'CI', 'Item', 'Description', 'Ordered: U/M', 'Unit Price: Net Price', 'Due Date: Prom Date', and 'Projected:'. The table contains 7 rows of data, with the first row highlighted in blue. Below the table are buttons for 'Detail', 'Drop Ship', 'EC VAT', and 'Order'. At the bottom, a status bar reads 'Enter data and press [Save], or press [Undo] to cancel changes.'

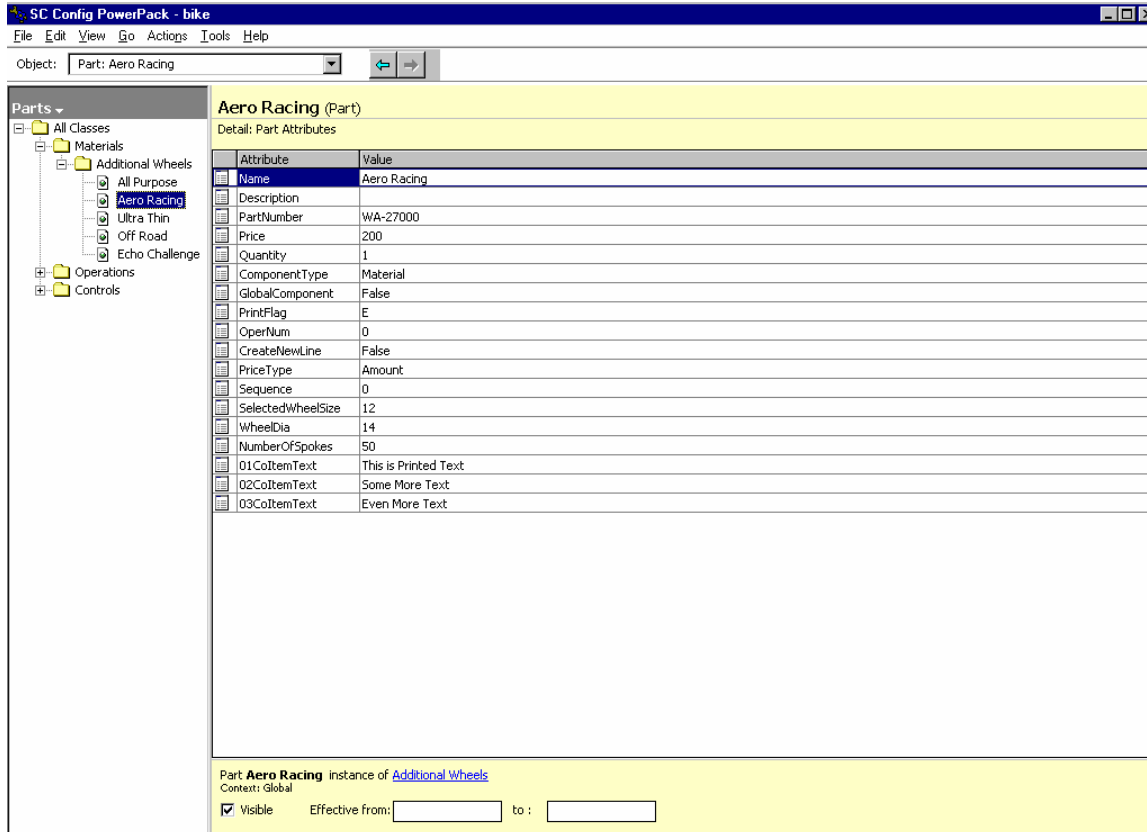
Ln#	CI	Item	Description	Ordered: U/M	Unit Price: Net Price	Due Date: Prom Date	Projected:
1		BIKE	Generic Bike	1.000	800.00000	08/31/01	
2		WA-27000	Wheel, Assembly, 27"	2.000		08/31/01	
3		ZAL-400	Pump, Bicycle	1.000		08/31/01	
4		SA-61500	Wheel, Assembly, 26"	2.000		08/31/01	
5		BR-20000	Rack, Rear, Deluxe	1.000		08/31/01	
6		MW-61500	Wheel, Assembly, Mour	2.000		08/31/01	
7		FL-10000	Flag, Red-White-Blue	1.000		08/31/01	

As you can see line item 2 through line item 7 were added based on the Alpha sorting of the name attribute, the different part classes had no bearing on the output.



SyteLine Configuration – Name Attribute – White Paper (cont'd)

SchemaString Mapping to print text – The name attribute has the same effect in setting the order of printed lines of text. In this example I have set six different attributes that all schema map to the coitem.text field, when the model is processed if one of the parts was selected it will write each attribute Value to the customer order line text.

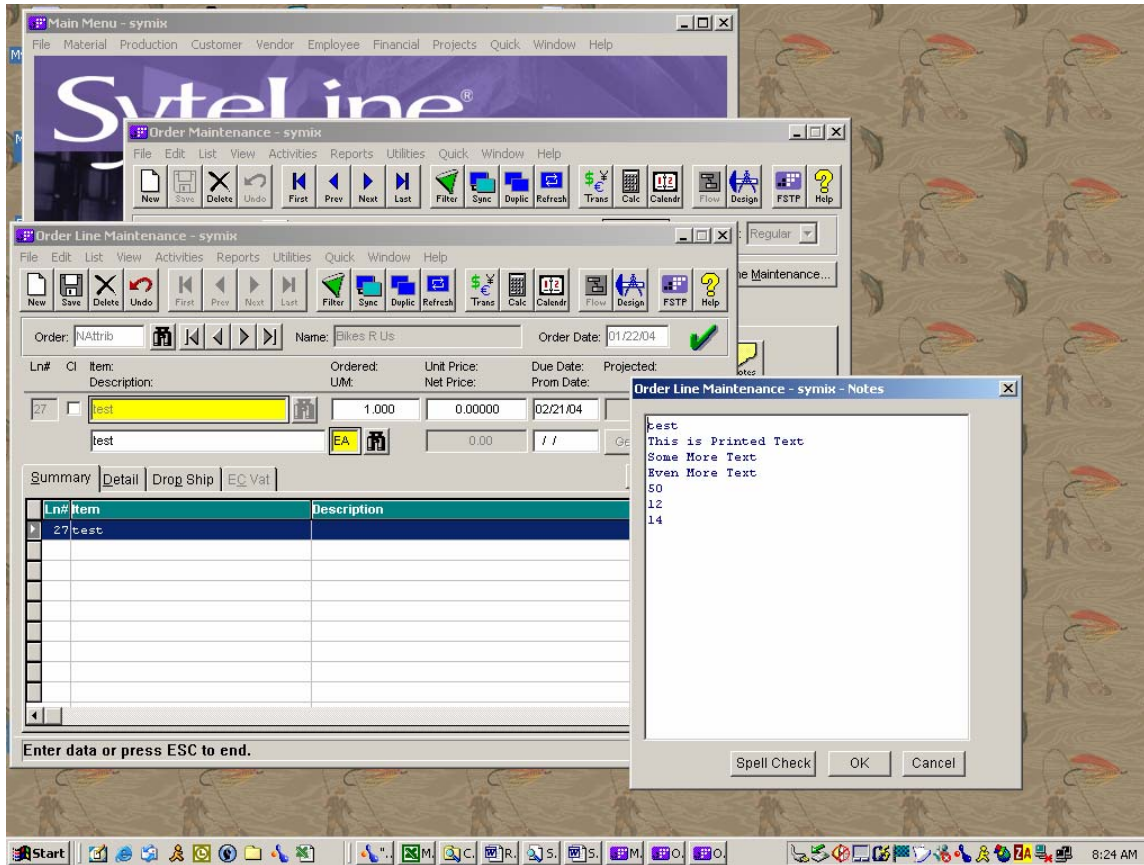


<u>Name Attribute</u>	<u>Part Number</u>	<u>SchemaString Attribute Name</u>	<u>Value</u>
Aero Racing	WA-27000	SelectedWheelSixe	12
		WheelDia	14
		NumberOfSpokes	50
		01ColtemText	This is Printed Text
		02ColtemText	Some More Text
		03ColtemText	Even More Text

When the attributes are printed, the order in which they print is ONLY based on the Alphanumeric sorting of the name attributes, again this has NO bearing on if the attributes are for one particular selection or multiple selections. It also is not dependant on the class names or sub classes names of the selections, the ONLY determining factor is the naming convention of the attribute name itself. The following shows the result of the selection of Aero Racing.



SyteLine Configuration – Name Attribute – White Paper (cont'd)



As you can see the attributes starting with what appears to be a numeric have a lower ASCII value than the ones that start with a letter character so they are output first. Also, to be noted is the fact that every character is looked at for the entire name of the attribute, so the naming of attributes need to be as specific as soon as possible. If the attributes were named ColtemText01, ColtemText02, and ColtemText03 then the attribute name would not be specific until the 12 character gets checked. However, by naming them 01ColtemText, 02ColtemText, and 03ColtemText the second character differentiates the attribute name and would automatically sort it differently.

01ColtemText	This is Printed Text
02ColtemText	Some More Text
03ColtemText	Even More Text
NumberOfSpokes	50
SelectedWheelSixe	12
WheelDia	14

Conclusion: The selections “Name” attribute and the naming of “user defined” attributes are key throughout the model and might needs some special consideration in order for a model to work properly. Some things to keep in mind when concerning the name field for selections or attributes:

- Do not have a Class name and a Selection within the class named exactly the same.
- Never use the exact same name for different classes or selections within the class.
- Different Classes should never have attributes being named exactly the same unless the attribute was added at a higher level and filtered down to the lower classes.